

Behind the Numbers



Go to page 31 for more data analysis.

STABLE FAMILIES

The FCFC's approach to achieving the desired community outcomes includes looking “behind the numbers” as part of our effort to move the community indicators in their desired directions (see pages 3-4). For the Stable Families outcome we have looked at Preventable Child Deaths (2005), Domestic Violence Deaths (2006) and Avoiding Poverty (2007). In this 10th Anniversary Report we revisit and update some of these analyses, and we show how they contribute to ongoing community conversations.

From the discussion of Avoiding Poverty in the 2007 Report:

According to this indicator, for almost a decade, the majority of first-born children of Montgomery County residents are starting their lives with an increased chance of growing up in poverty.

UPDATE:

A high value for this indicator, which is based on some demographic characteristics of the parents, is good. It means that a high proportion of couples are starting their families under conditions which increase the chances that their children will grow up without

experiencing poverty, (i.e., they are married, over 20 years old, and high school graduates).

As shown in Figure 1, this indicator varies widely across the county. The areas of the county where the value is the lowest, meaning that children have an increased chance of growing up in poverty, are often the same areas where the poverty rate is high, as can be seen by comparing Figures 1 and 2.

In 2008, the Stable Families Outcome Team collaborated with the Economic Self-Sufficiency Outcome Team and the Supportive and Engaged Neighborhoods Outcome Team (see pages 28 – 30) to support the creation of the Comprehensive Neighborhood Initiative, a place-based effort to have a positive impact on all of the community outcomes and indicators (see pages 51 – 54).

The places to be targeted by the Initiative will be neighborhoods burdened with high rates of poverty. Therefore, improving the conditions in these neighborhoods will improve the chances that children born within them will avoid growing up in poverty.

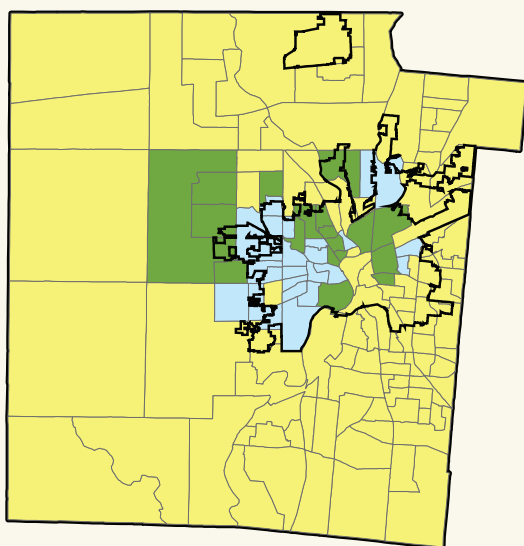


Figure 1. Low values of the “Avoiding Poverty” indicator ($\leq 20\%$, green) and extremely low values ($\leq 10\%$, blue) for the 2003-05 period are concentrated in Census tracts (marked by thin lines) which are in or near the city of Dayton (marked by a thick line). [2003-05 are the most recent years for which these data are available by Census tract.]

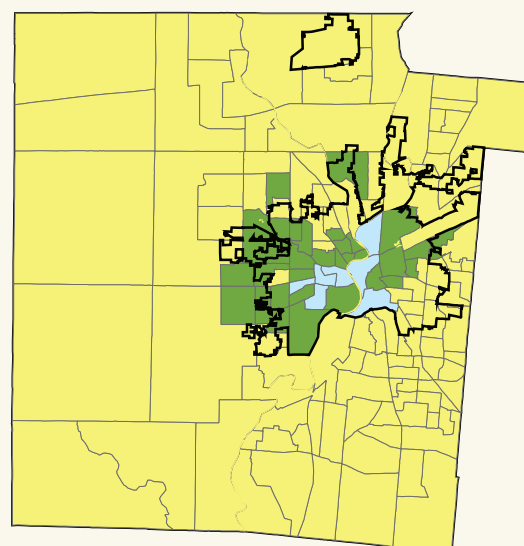


Figure 2. High poverty rates ($> 20\%$, green) and extremely high poverty rates ($\geq 40\%$, blue) are concentrated in Census tracts (marked by thin lines) which are in or near the city of Dayton (marked by a thick line).